



Where There's Energy, There's Opportunity™

Unit

&

Service Parts and Accessories Catalog

Model: EL-75H

Orders: (615) 471-5200

Fax: (615) 471-5202

318 Seaboard Lane

Suite 316

Franklin, TN 37067

www.energylogic.com

Effective January 17, 2022

This document contains privileged and confidential information. EnergyLogic, LLC submits this document with the understanding that it will be held in strict confidence. No part of the document may be circulated, quoted, or reproduced for distribution without the express permission of EnergyLogic, LLC.

Table of Contents, Using this Catalog.....	2
Terms and Conditions.....	3
Furnace Assembly.....	4
Burner Assembly.....	5
Air Compressor Assembly.....	6
Nozzle-Line Assembly.....	7
Tank/Base Assembly.....	8
Fuel Pump and Pickup Assemblies.....	9
Cabinet Assembly.....	10
Accessories.....	11
Service & Maintenance Parts and Tools	12
Flue Material	13
Notes (blank page for customer notes)	14

Using this Catalog

To use this catalog, follow these easy steps:

1. Determine what Assembly or Component you wish to order.
2. Reference the Table of Contents above to determine the page the part is located on.
3. Use the exploded views to locate the part Item Number, then cross reference the number in the table.

-or-

Scan through the tables and use any of the information provided to locate the part.

Note: Drawings are not to scale.

General Information

- All content in this catalog is subject to change without notice.
- EnergyLogic is abbreviated as EL. "Our" refers to EnergyLogic. "You" and "your" refer to the Dealer, Reseller and Authorized Service Provider.

Product and Price Information

1. Prices, specifications and availability of products are subject to change without notice.
2. Prices do not include charges for shipping, handling and applicable taxes.
3. Descriptions may not reflect current technical information.
4. Any typographical, photographic, drawing or specification error in products or pricing is subject to correction.
5. Products shown are not to scale.
6. Products may vary in appearance.
7. Prices listed in this catalog supersede any previous listings.
8. EL shall have the right to refuse or cancel any orders placed for any product listed at the incorrect price.
9. Promotional sales are not retroactive.
10. Advertising and selling parts over the internet is prohibited.
11. EL collects sales taxes for sales made to residents and businesses of the State of Tennessee.

Parts Distribution

1. You will be given the responsibility of selling service parts to customers in your coverage area.
2. If a customer in your service area contacts EL to purchase parts, EL will refer them to you.
3. Once the customer contacts you, EL expects a follow up communication with that customer within 24 hours. EL strongly urges you to stock a detailed list of parts to quickly meet your customer's needs.
4. A Recommended Service Parts Stocking List and Consumable Parts List are available upon request.

Placing Orders

EL strongly urges you to utilize the website to place orders for speedy confirmation and processing. A web-based or hardcopy Purchase Order is required for all orders.

1. Orders may be placed 24 hours a day via EL's Dealer Website or by contacting customer service at customerservice@energylogic.com. You may also send a fax order form or purchase order to 615-471-5202.
2. If an order is placed via phone, EL will send an order confirmation to you to sign and return before processing will occur.
3. With respect to "small package items", if an item on a customer order is not available to ship at the customer's requested ship date because of a backorder or lead-time situation, EL will automatically split the order and ship what is available to ship at the customer request date, unless we receive written instructions on the customer PO to the contrary. We will not split an order for a customer with "Ship Complete" terms. The customer will be responsible for all freight charges on split orders.
4. With respect to "LTL items", if an item on a customer order is not available to ship at the customer's requested ship date because of a backorder or lead-time situation, EL will contact customer for confirmation as to whether we should split the order or not. We must receive written confirmation from the customer prior to splitting an order. The customer will be responsible for all freight charges on split orders.
5. "Small Package" orders requested for same day shipping must be specified for Air Freight and be received by 11AM CST in order to ship same day. Upon customer request, EL will make every effort to ship such order the same day, but cannot guarantee such.
6. Freight terms must be documented by a PO, a signed order confirmation or an e-mail/fax from the customer prior to shipping overnight orders.
7. Purchase orders will be limited to one revision within 24 hours of original order placement. Additional revisions will be entered as a separate order from original PO & subject to standard shipping charges.

Terms

1. All orders are shipped F.O.B. EnergyLogic.
2. Payment terms may be granted to customers based on an evaluation of credit risk.
3. To retain payment terms, customer account must remain in good standing with payment received by the required due dates.
4. EnergyLogic may adjust or amend customer terms at its discretion, based on customer payment history or changes in credit risk.

Shipping

1. EL shall use commercially reasonable methods to ship parts.
2. Customer Pickup orders must be placed 24 hours in advance and specify a requested pick up date and time.

Return Authorization

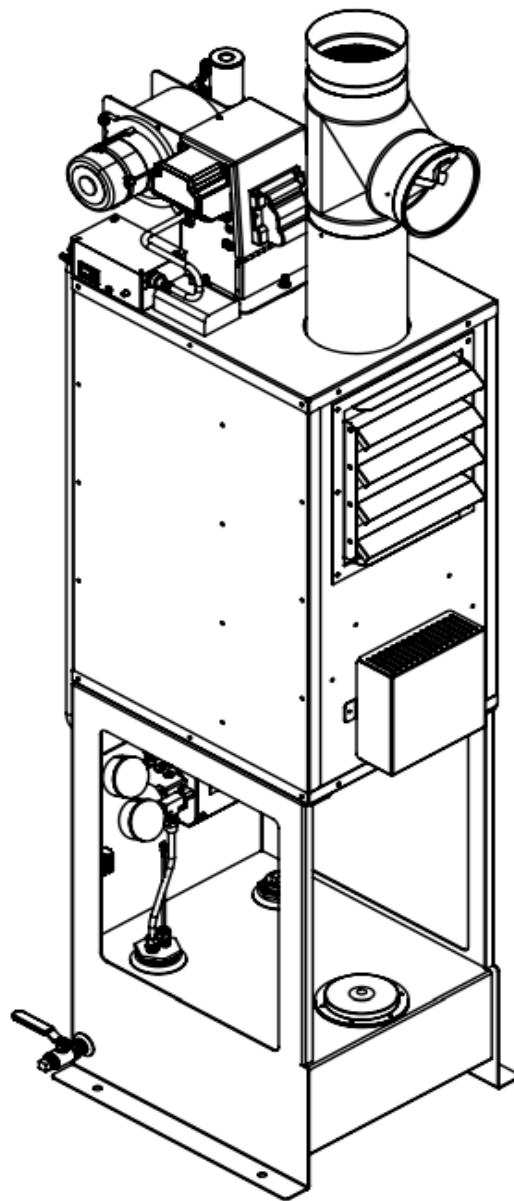
1. Prior to returning any part you must obtain a return authorization number (RAN).
2. EL shall have the right to deny any RAN request.
3. Parts returned without a RAN will not be accepted.
4. Warranty returns must be submitted within 30 days of service.
5. All return parts must be received within 30 days from RAN issue date or they will be denied.
6. All stock adjustments must be returned within one year from the date of purchase, in "new" condition without alteration and in original package.
7. Proof of Purchase may be required
8. Restocking Fee may apply.
9. EL shall at its discretion either: (a) request photos with authorization to scrap the part and issue credit, (b) require the part to be returned freight prepaid, with credit due upon receipt and evaluation, or (c) send a replacement part.
10. Parts received which are found not to be defective, not in new condition or over 30 days will be returned at customer's expense.

Processing Credits

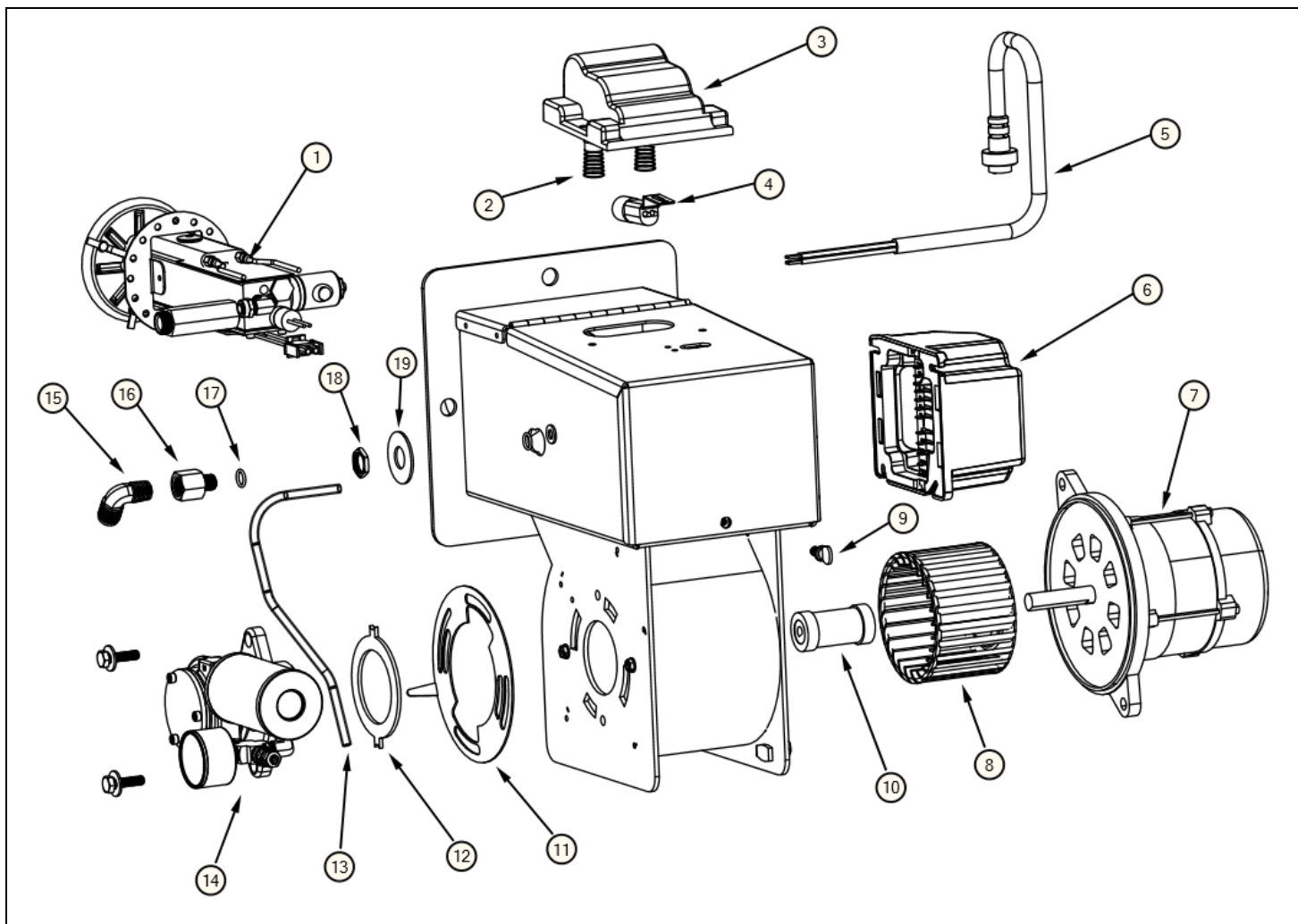
Credits will be processed within 30 days from our receipt of all the information required to process the credit. Credits will remain valid for 6 months from the date of issue.

Parts Use Statement

When repairs are made within the Limited Warranty, only genuine EnergyLogic, LLC or EnergyLogic, LLC (EL) approved parts and accessories may be used. Parts and accessories advertised as being "the same" as parts required by EL, but not sold through EL, do not qualify for use in warranty repairs or any repairs paid for by EL. Parts not approved by EL may not have been validated, tested or certified for use. Non-approved parts or assemblies may result in a change to the unit's design characteristics and will affect its ability to conform to UL or NFPA guidelines. For this reason, EL disclaims all liability for loss or damage resulting from the use of non-approved parts or assemblies and the Limited Warranty of the unit containing such parts or assemblies is voided. EL parts installed onto a product not sold by EL do not conform to UL or NFPA guidelines. EL disclaims all liability for loss or damage resulting from such products and the Limited Warranty of such parts will be voided.

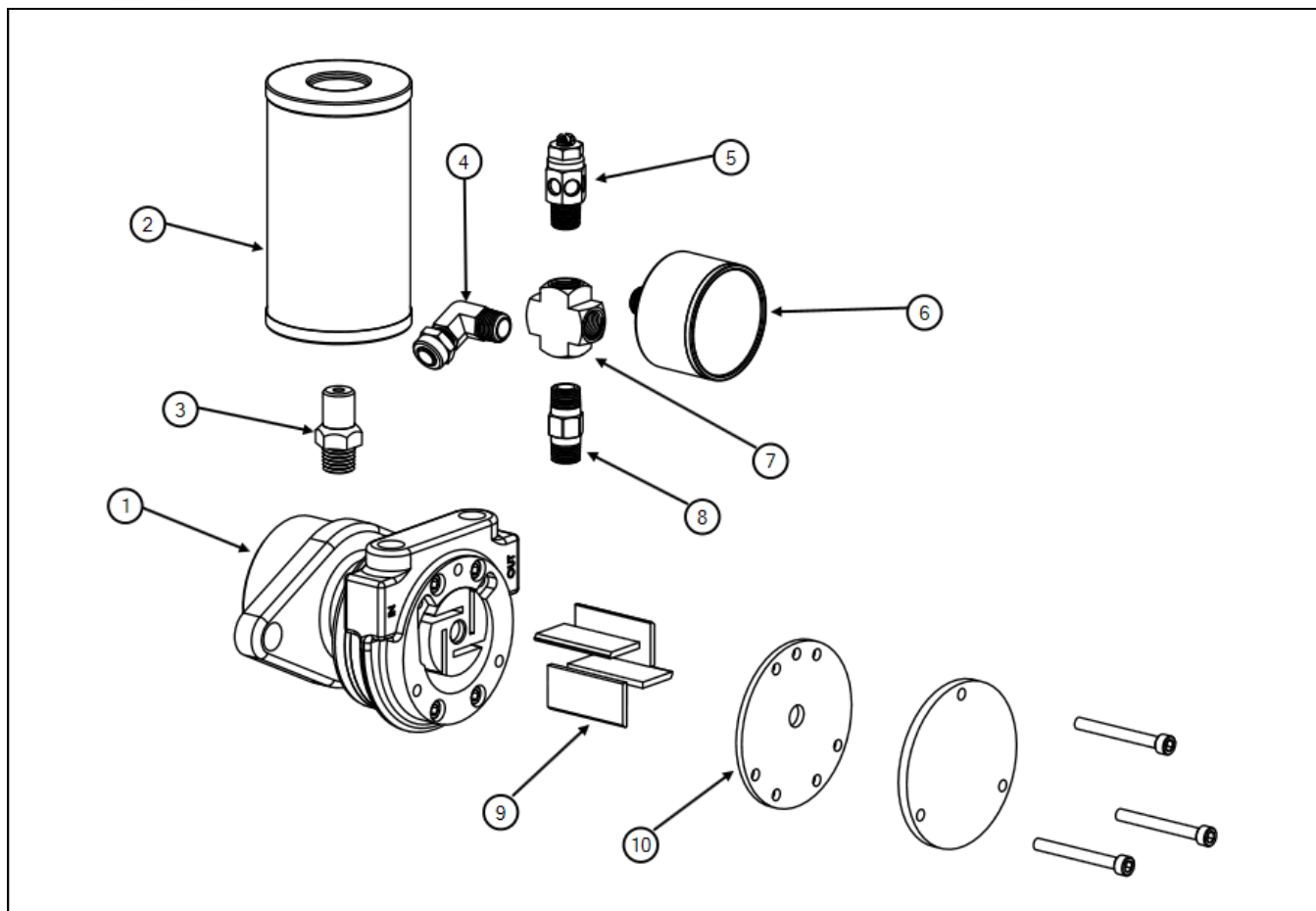


Part Description	Part Number
75000 BTU Furnace with 10 Gallon Tank and Through the Roof Flue Kit	11075104
75000 BTU Furnace with 10 Gallon Tank and Through the Wall Flue Kit	11075105



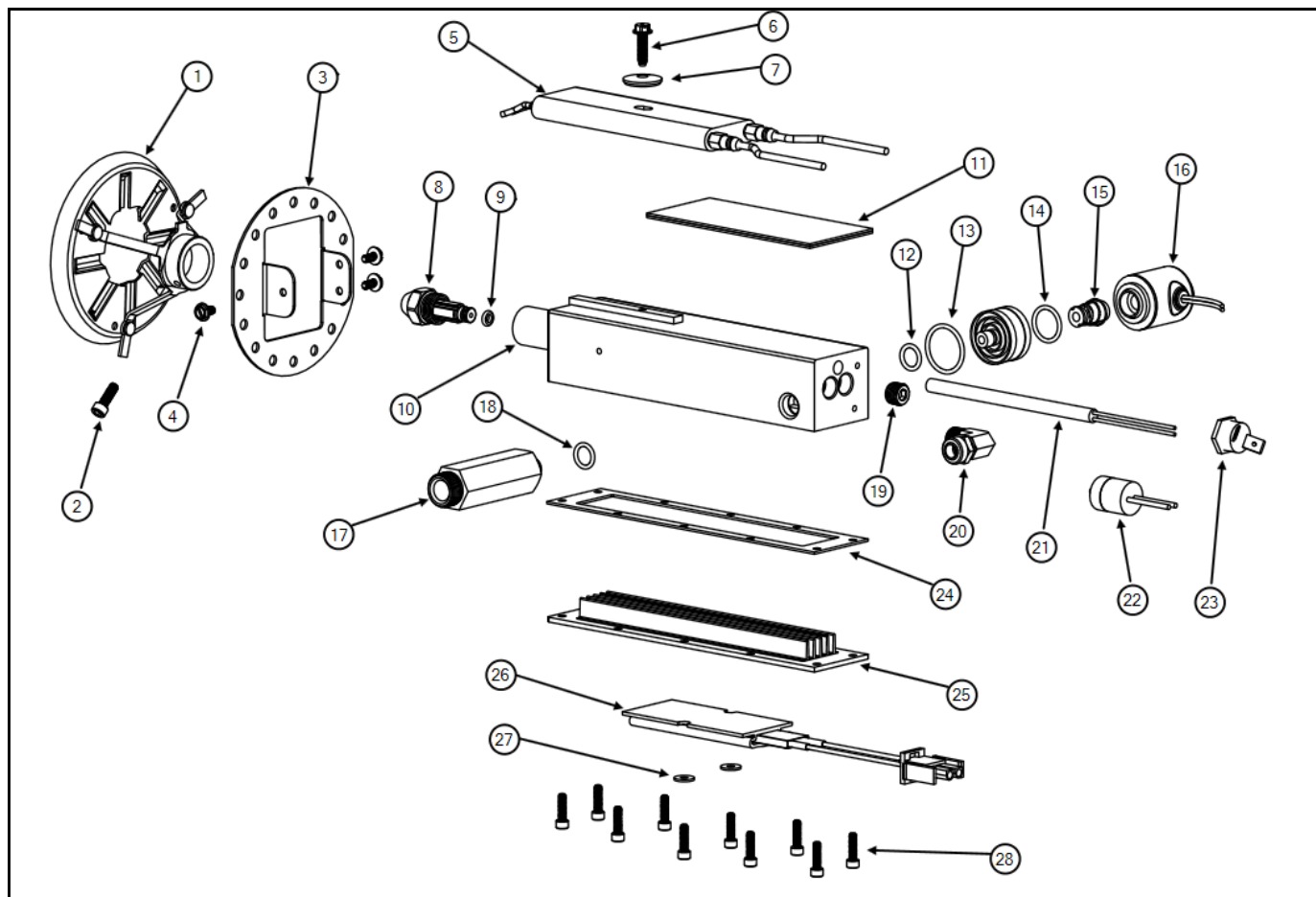
Ref.#	Part Description	Part Number	Qty
*	Burner Assembly - Complete	81010125	1
1	Nozzle Line Assembly—Complete	74000453	1
2	Spring, Transformer	20213138	1
3	Transformer - Ignition	76001381	1
4	Detector—CAD Cell	20210110	1
5	Burner Cord Assembly, Round Plug, 12-Inch	74000112	1
6	Control - Primary, Honeywell, 30 Second with Post Purge	81010199	1
7	Motor - Burner, 1/6 HP, AF	9502	1
8	Wheel—Burner Blower, 75H	76001375	1
9	Thumb Screw, 1/4 - 20 x 1/2"	70039552	1
10	Coupling, Compressor to Burner Motor,	81010198	1
11	Air Shutter - AF Burner	70052321	1
12	Plate - Air Compressor Mount	76001303	1
13	Tubing - 1/4" O.D., Compressed Air	76001380	1
14	Air Compressor Assembly - See Page 5	81010197	1
15	Elbow - 3/8 Flare x 1/4 MNPT	20620110	1
16	Fitting - Adapter, 1/4 FNPT x 7/16-20 Male	76001329	1
17	O-Ring, Bulkhead Fitting	76001386	1
18	Nut, Hex Panel	76001328	1
19	Washer, Black Oxide	76001379	1
*	Gasket - Burner, Klinger	20910103	1

* Not shown.

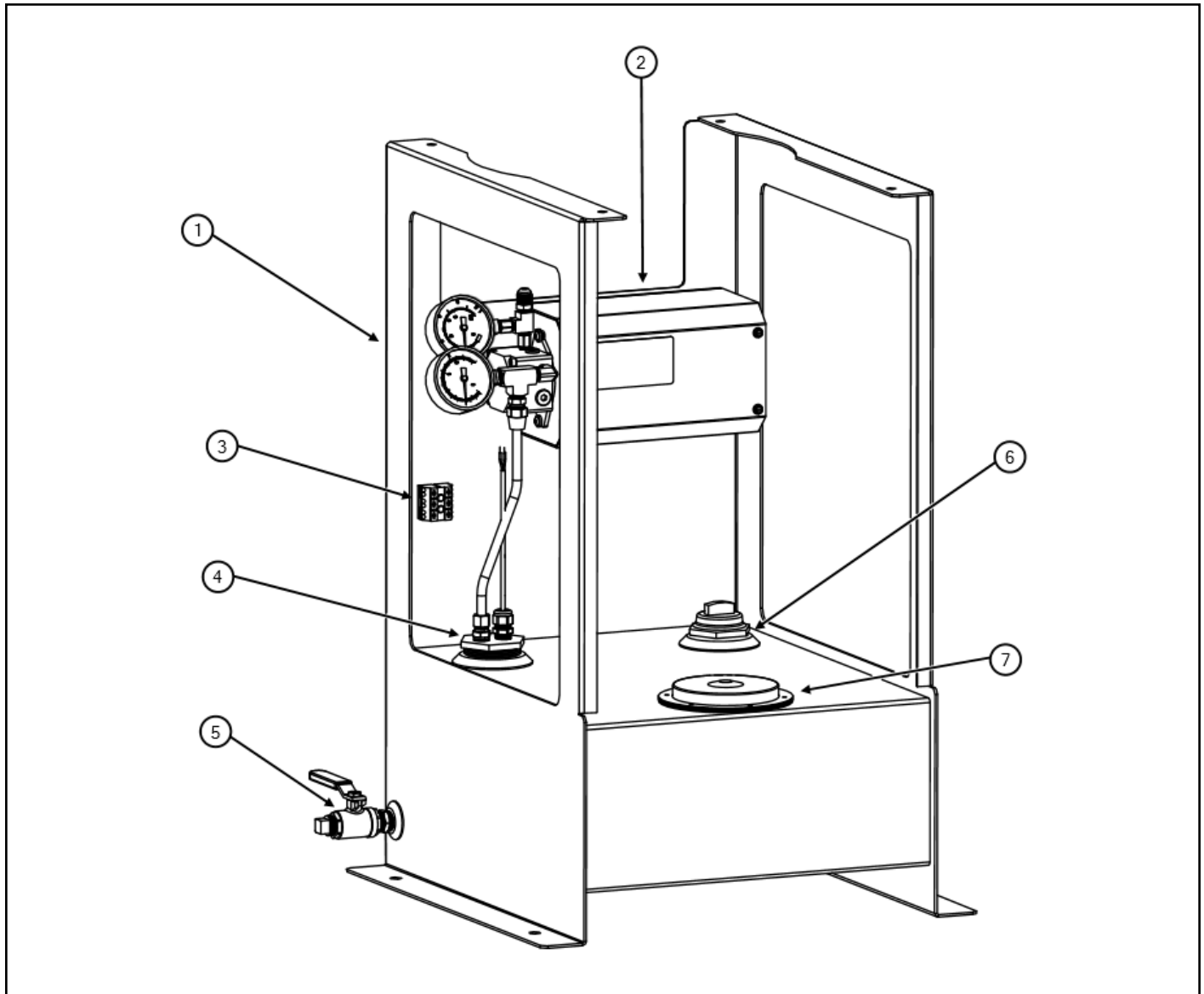


Ref.#	Part Description	Part Number	Qty
1	Air Compressor	06000807	1
2	Filter - Air Compressor	20210112	1
2	Filter - Air Compressor (6 Pk)	05000037	1
3	Fitting - Air Comp Filter 1/8"	06000794	1
4	Elbow - Quick Connect, 1/8" NPT x 1/4" Tube	76001325	1
5	Muffler - Pressure Control, 1/8"	76000146	1
6	Gauge - Pressure, 15 psi	20270300	1
7	Cross - Female, 1/8"	76000148	1
8	Nipple - Close Hex, 1/8"	20640125	1
9	Vanes - Air Compressor, Sm (4 Pk)	06000821	1
10	Plate - Carbon End	20213143	1
*	Kit - Maintenance, Air Compressor	05000166	1

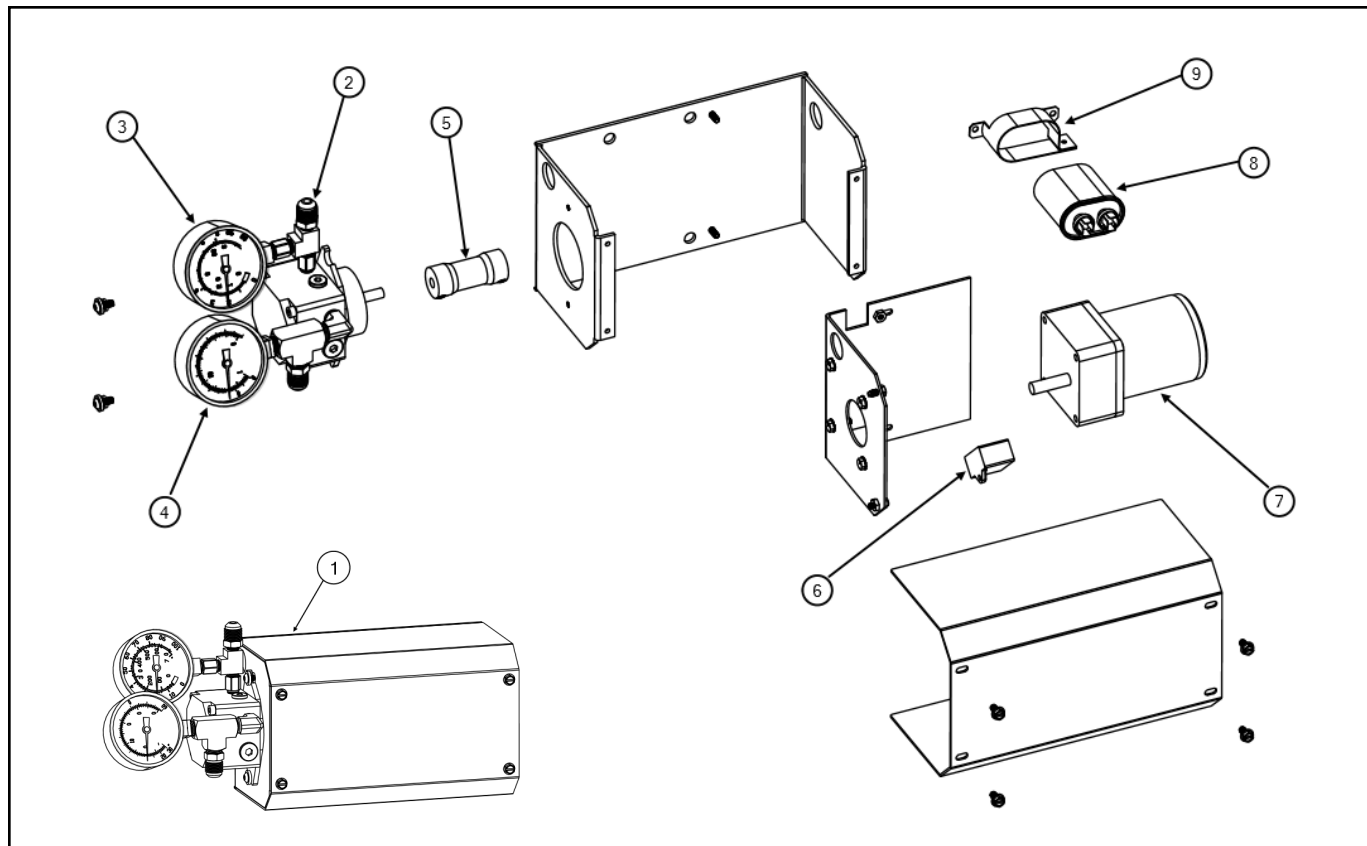
* The Air Compressor Maintenance Kit comes with 4 replacement vanes and the carbon end plate.



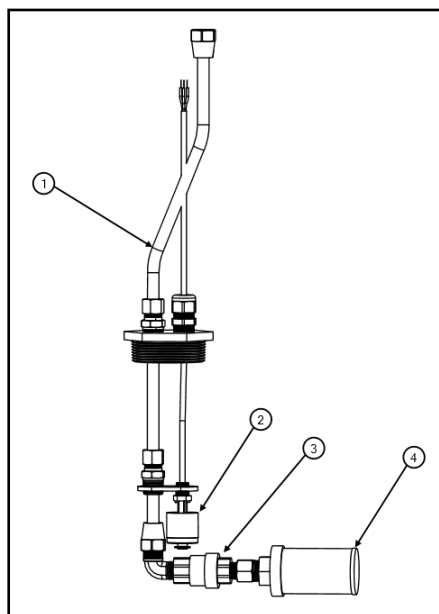
Ref.#	Part Description	Part Number	Qty
1	Head - Flame Retention	04000280	1
2	Screw - Socket Head, #8-32 x 1/2L	70057181	1
3	Plate, Air Distribution	76001385	1
4	Screw - Hex Head, #6-32 x 1/4L	76001398	1
5	Electrode - Single Bend	06000593	1
	Electrode - Single Bend (5 Pack)	05000049	1
6	Screw— Hex Head, #8-32 x 5/8L	20410117	1
7	Washer - #8 x 3/4, Electrode	20410115	1
8	Nozzle - #11	32002	1
9	O-Ring - Nozzle	20213152	1
10	Nozzle Block, Machined	76001132	1
11	Insulation - Rubber/Fiberglass	81010152	1
12	O-Ring - Solenoid Valve, Inner	33311	1
13	O-Ring - Solenoid Valve, Outer	33312	1
14	O-Ring - Solenoid Valve, Body	33314	1
15	Nucleus Plunger Assembly - Solenoid Valve	33315	1
16	Valve - Solenoid , Complete	76001326	1
17	Fitting - Oil Bulkhead	76001129	1
18	O-Ring—Bulkhead Fitting	76001386	1
19	Plug - Allen Socket, 1/8"	20490149	1
20	Elbow - Quick Connect, 1/8" NPT x 1/4" Tube	76001325	1
21	Heater - Cartridge, 1/4" x 4"L, 140W	33298	1
22	Switch - Temperature, 140 F	70057146	1
23	Switch - Temperature, 200 F	33390	1
24	Gasket - Extrusion	76001135	1
25	Extrusion - Machined	76001133	1
26	Heater Assembly - PTC	81010153	1
27	Washer - #6 x 3/8"	76001323	1
28	Screw - Socket Head, #6-32 x 1/2L	76001322	1



Ref.#	Part Description	Part Number	Qty
1	Tank/Heater Base	74000442	1
2	Pump Assembly	74000455	1
3	Terminal Block - 3 Position	76000117	1
4	Top Suction Assembly	74000456	1
5	Drain Valve Assembly	81010151	1
6	Gauge, Tank	76001337	1
7	Fill Port/Strainer Assembly	76001335	1

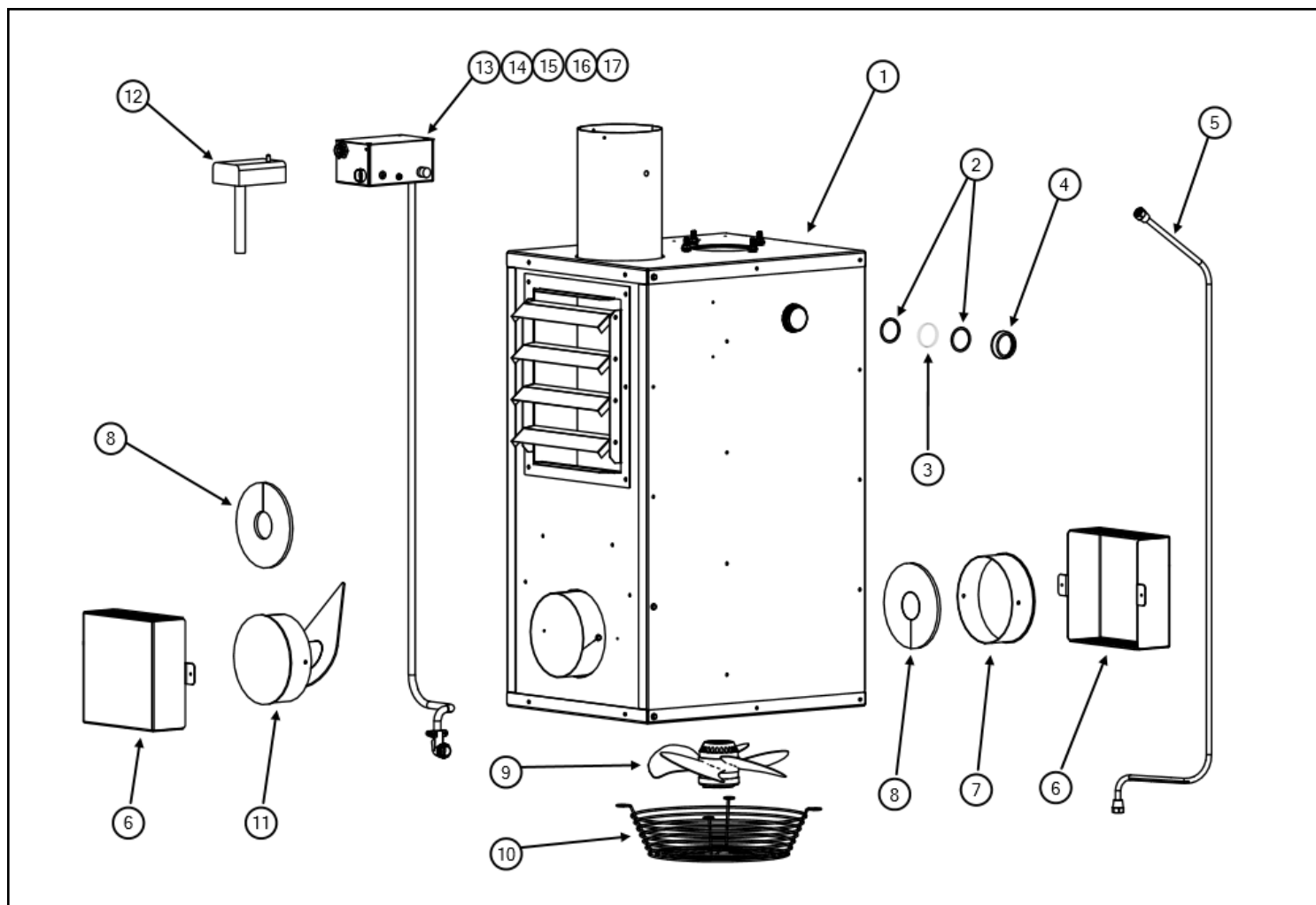


Ref.#	Part Description	Part Number	Qty
1	Pump Assembly	74000455	1
2	Pump with Fittings and Gauges	74000454	1
3	Gauge - 0-100 PSI Pressure, 1/8"	76001387	1
4	Gauge - Vac/Pressure Combo 1/4"	76001388	1
5	Coupling - Pump to Motor	20220158	1
6	Capacitor - Pump Motor	06000842	1
7	Motor w/Gear Box Kit	81010154	1
8	Capacitor—Fan Motor, 6 uF	76001393	1
9	Strap—Fan Capacitor	76001394	1



Fuel Pickup Assembly

Ref.#	Part Description	Part Number	Qty
1	Top Suction Assembly	74000456	1
2	Float Switch - SPDT, 1/8"	76000557	1
3	Check Valve - 1/4"	20220153	1
4	Suction Strainer - 100 Mesh Steel	76001339	1



Ref.#	Part Description	Part Number	Qty
1	Cabinet Assembly - 75H (No Harness)	74000440	1
2	Gasket - Round Viewport	76001390	1
3	Glass - Round Viewport	76001392	1
4	Nut - Round Viewport	76001391	1
5	Tubing Assembly - Pump to Burner	74000464	1
6	Safety Cover	76001397	1
7	Cleanout Cap and Gasket	74000450	1
8	Gasket - Cleanout Cap	76001183	1
9	Axial Fan and Motor Assembly	76001367	1
10	Wire Guard - Fan	76001368	1
11	Baffle Assembly with Gasket	74000449	1
12	Fan & Limit Switch - 5 Inch	70056419	1
13	Wiring Harness Assembly	74000448	1
14	Fuse - 8A	20510113	1
15	Hour Meter - Digital	06000224	1
16	Receptacle - Round, Burner Wiring	06000221	1
17	Light - Low Fuel	76001373	1



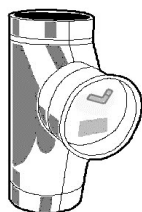
Description	Part Number	Qty	Booking	Non-Booking	MSRP
Pump - Electric, Transfer, 4.25 GPM	20202129	1	\$464	\$530	\$742

Electric transfer pump which can be used to fill the integral tank at the heater from a remote barrel or larger storage tank.



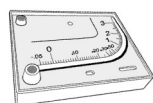
Description	Part Number	Qty	Booking	Non-Booking	MSRP
Thermostat - Wall, Programmable	20230178	1	\$37	\$45	\$59
T/Stat Wire Assembly (with White 2-Pin Plug)	20511311	1	\$10	\$11	\$14

Battery powered thermostat with 5-2 programmability. Allows the target temperature to be automatically reduced at night and on weekends to save fuel.



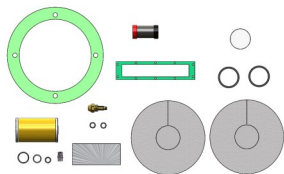
Description	Part Number	Qty	Booking	Non-Booking	MSRP
Tee with Barometric Damper - 6 Inch , Black	76001406	1	\$67	\$77	\$106
Barometric Damper - 6 Inch	20770115	1	\$36	\$41	\$58

Used to control the draft in the flue to the proper level over varying ambient conditions.



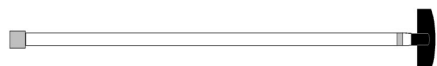
Description	Part Number	Qty	Booking	Non-Booking	MSRP
Draft Gauge Assembly (Manometer , Probe, Tubing and Oil)	14070198	1	\$61	\$71	\$95
Gauge - Draft (Manometer)	20270184	1	\$45	\$51	\$69
Draft Gauge Probe Kit	14003110	1	\$12	\$14	\$18
Oil - Draft Gauge	20273189	1	\$11	\$13	\$17

Used to measure the draft in the flue.



Description	Part Number	Qty
Kit - Maintenance	75000208	1

The maintenance kit provides all the necessary service parts (gaskets, o-rings, air filter, nozzle, etc.) to clean and reassemble the heater and burner.



Description	Part Number	Qty
Cleaning Tool with Extension Pole	81010150	1

The tool head is curved to match the shape of the heat exchanger and combustion chamber in order to remove ash completely and efficiently.



Description	Number	Qty
Extension Rod T Handle	20092112	1
Extension Rod 4' x 1/4" NPT	20092114	1
Extension Rod 6' x 1/4" NPT	20092116	1
Flue Brush - 6" x 1/4" NPT	06000084	1



Brush and poles for cleaning the heat exchanger and flue/chimney.



Description	Part Number	Qty
Burner Brush Kit (includes all pictured)	05000071	1
Burner Pick Hand Tool - A	20092122	1
Fine Wire Hand Scratch Brush - B	20092118	1
Parts Cleaning Brush - C	20092120	1
Pipe Brush 0.200 - D	20092108	1
Pipe Brush 3/8 - E	20092110	1

Burner Brush Kit includes all pictured or available for purchase separately.

- A. Pick Hand Tools—set of four (remove o-rings, clean threads and small orifices)
- B. Parts Cleaning Brush (clean painted components)
- C. Fine Wire Hand Scratch Brush (clean pre-heater cap, external nozzle block, burner blower wheel and unpainted components)
- D. 3/16" Pipe Brush (clean nozzle block)
- E. 3/8" Brush (clean solenoid valve)

A Flue (Chimney) Kit is supplied with each 75H heater. The kits are Class A, all fuel rated and meet or exceed NFPA guidelines. There are two options available: Thru-the-Roof Kit (81010010) and Thru-the-Wall Kit (81010009). The kits use 6" DuraBlack, Single-Wall Black Pipe for interior pieces and 6" DuraTech Double Wall (stainless steel inner pipe, galvanized outer pipe) where the kit passes through the roof or wall and for exterior pieces. The kits have all the components necessary to construct a basic chimney system for a 16 foot roof height from where the heater is mounted. Additional parts may be necessary and are listed below. Note that the through the roof kit is provided with a rubber boot, which is recommended for metal roofs. Metal flashing may be necessary for other roof types.

For additional information and instructions see:

<https://duravent.com/DuraTech-5-8>

and

<https://duravent.com/durablack/>

Flue Material:

6-Inch Double-Wall has Galvanized Outer Shell with Stainless Steel Inner Liner (Minimum 2-Inch Clearance to Combustibles).

6-Inch Single-Wall is Black Pipe (Minimum 18-Inch Clearance to Combustibles).

Part Description	Part Number	Qty
Chimney Pipe, DW, 6" Long x 6" Diameter	4800	1
Chimney Pipe, DW, 12" Long x 6" Diameter	4801	1
Chimney Pipe, DW, 18" Long x 6" Diameter	4802	1
Chimney Pipe, DW, 24" Long x 6" Diameter	4803	1
Chimney Pipe, DW, 36" Long x 6" Diameter	4804	1
Elbow Kit, DW, 15 Degree x 6" (Contains Two Elbows and One Strap)	4805	1
Elbow Kit, DW, 30 Degree x 6" (Contains Two Elbows and One Strap)	4806	1
Tee with Cap, DW, 6"	4807	1
Bracket, DW Tee Support, 6"	4906	1
Chimney Cap with Spark Arrestor Screen, 6"	4909	1
Finishing Collar, 6" (Adapts from SW to DW Pipe)	4912	1
Black Pipe, SW, 24" Long x 6" Diameter	4918	1
Black Pipe, SW, 12" Long x 6" Diameter	4919	1
Elbow, 45 Degree, Black, SW, 6"	4921	1
Slip Connector, Black Pipe, SW, 14" Long x 6"	4920	1
Elbow, 90 Degree, Black, SW, 6"	4922	1
Tee, Black, SW, 6"	4923	1
Firestop Radiation Shield, 6"	4957	1
Attic Insulation Shield, 6"	4951	1
Flat Ceiling Support Box, 6"	4953	1
Trim Collar, 6"	76001403	1
Adapter, Crimped to Black Pipe, 6"	76001405	1
Roof Support, 8" (Holds Chimney at Roof)	4936	1
Extended Roof Support, 6" (Supports Chimney above Roof from Wind)	4913	1
Flashing, Metal, 6", For Flat Roofs	4914	1
Flashing, Metal, 6", For 0/12 to 6/12 Pitched Roofs	4915	1
Flashing, Metal, 6", For 7/12 to 12/12 Pitched Roofs	4916	1
Storm Collar, 6"	4917	1
Wall Strap, 6", Galvanized	4907	1
Wall Thimble, 6" DW, For 4" to 10" Thick Wall	4908	1
Rubber Boot Kit, Dekite #8	70017	1
Silicone RTV, 2.8 Oz Tube	4950	1
High Wind Chimney Cap Kit, 6" (Use in High Wind Situations)	75000201-SS	1



Where There's Energy, There's Opportunity™

Orders: 1+((615) 471-5200

Fax: 1+((615) 471-5202

318 Seaboard Lane

Suite 316

Franklin, TN 37067

www.energylogic.com